

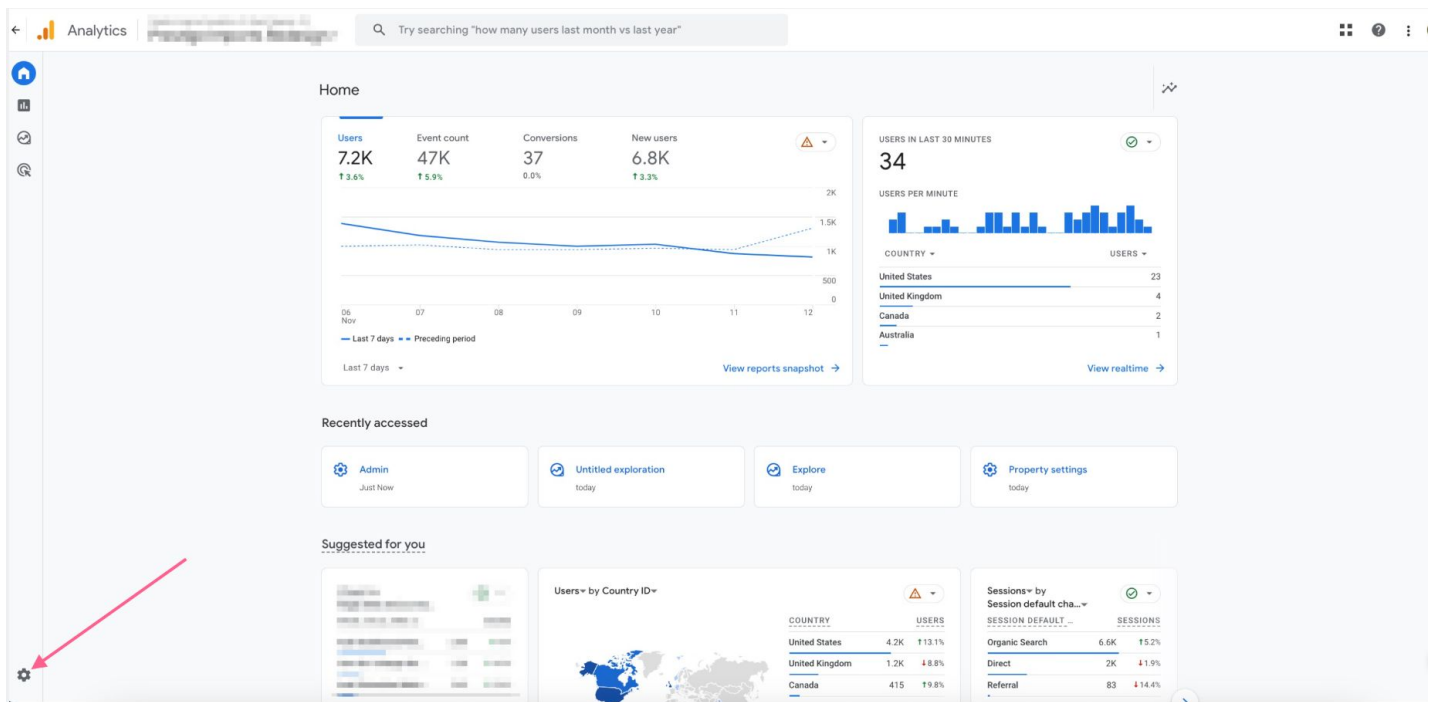
In order to have ASC/DI website events pushed to a GA4 property, the Measurement ID is needed.

Measurement IDs have the following format: G-XXXXXXXXXX

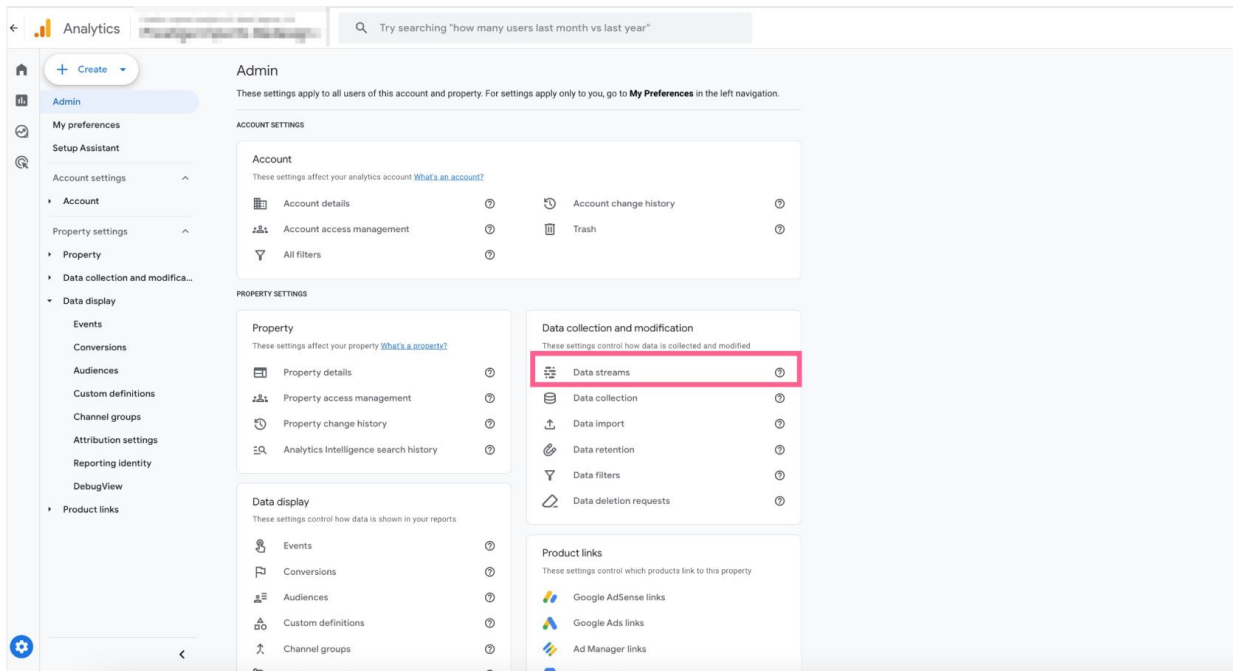
GA4 has a multitude of different IDs such as Account ID, Property ID, and Stream ID. These IDs all service different purposes and cannot be used to push events to a GA4 property. These IDs also have different formats than the Measurement ID.

The following steps outline how to locate the Measurement ID in your GA4 property.

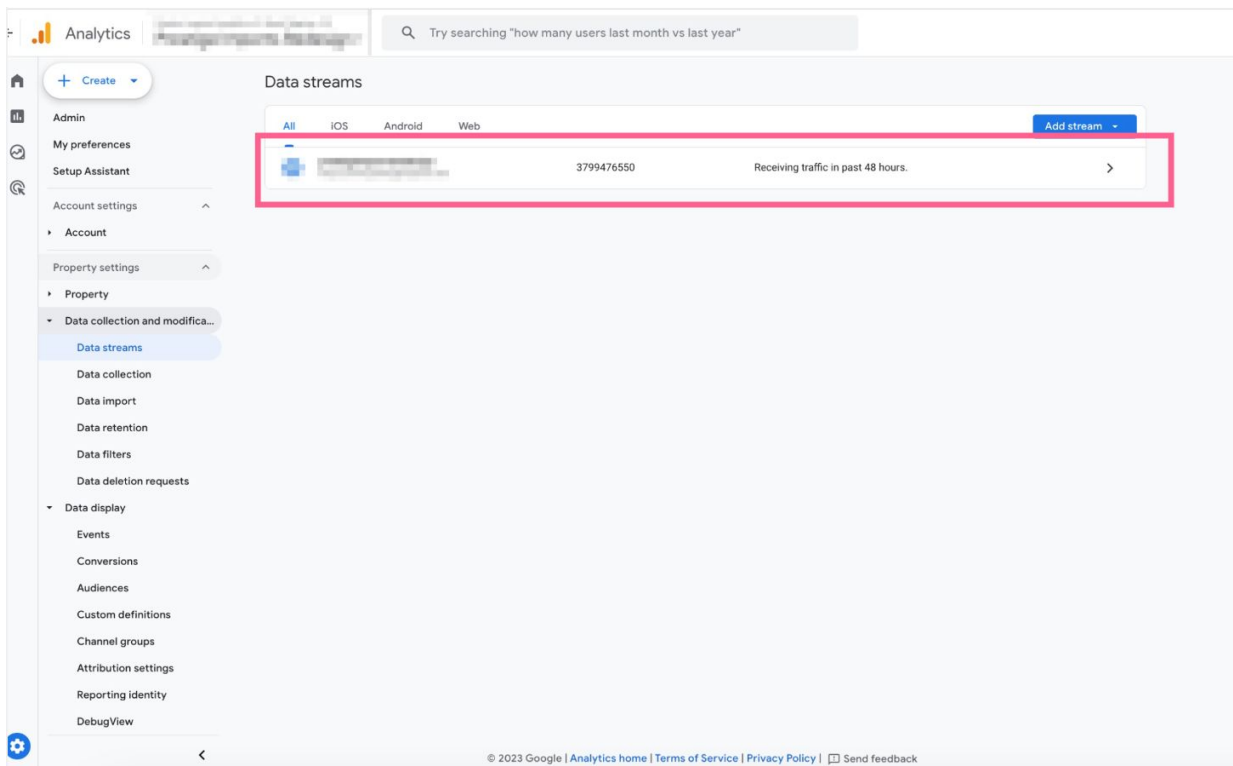
**STEP 1:** Log into your GA4 property for the site in which you are trying to locate the Measurement ID for. Click Admin.



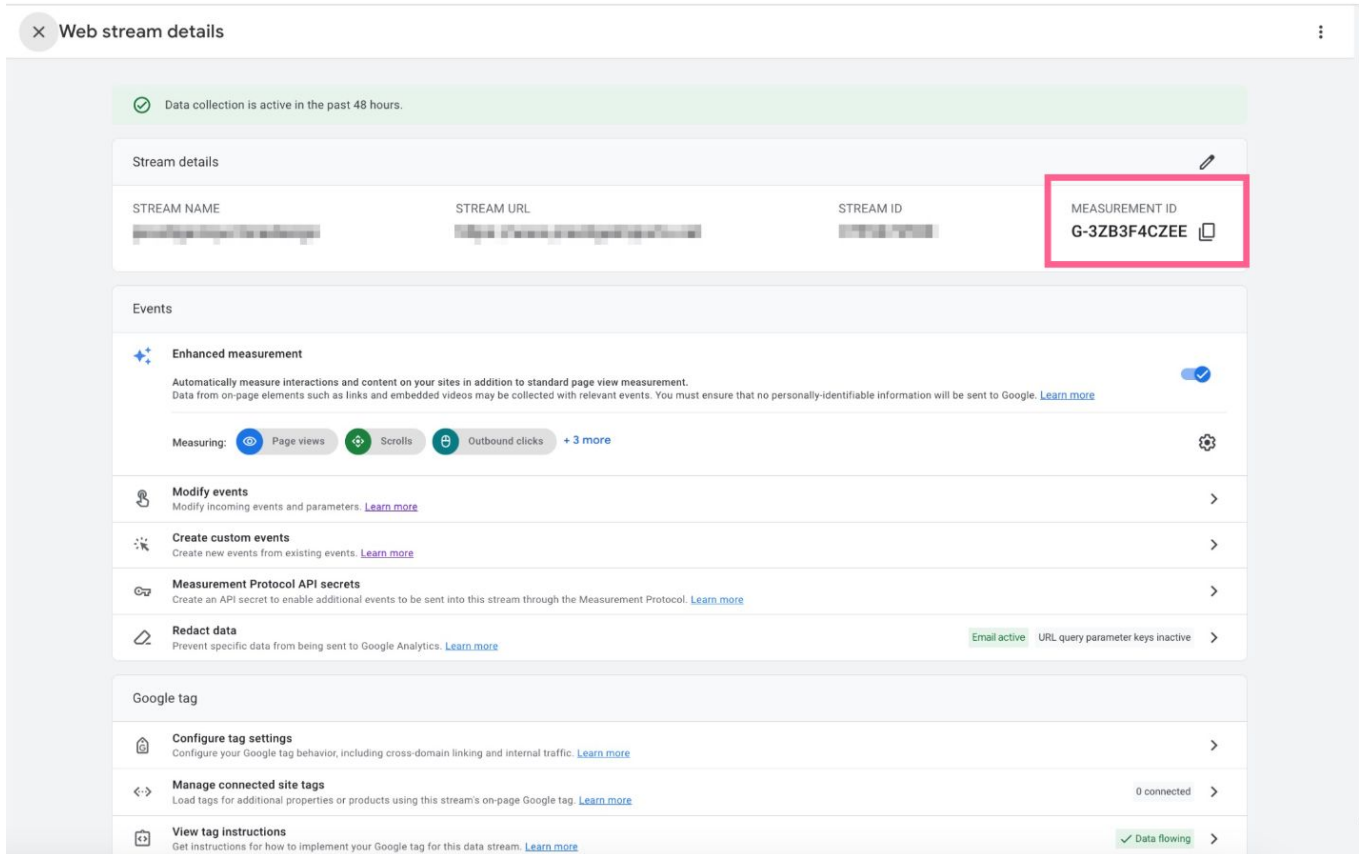
## STEP 2: Under 'Data collection and modification' click on "Data streams"



## STEP 3: Click on data stream for the site in which are locating the Measurement ID for



## STEP 4: Copy the Measurement ID in top right corner



Web stream details

✓ Data collection is active in the past 48 hours.

Stream details

STREAM NAME	STREAM URL	STREAM ID	MEASUREMENT ID
[REDACTED]	[REDACTED]	[REDACTED]	G-3ZB3F4CZEE

Events

- Enhanced measurement**  
Automatically measure interactions and content on your sites in addition to standard page view measurement. Data from on-page elements such as links and embedded videos may be collected with relevant events. You must ensure that no personally-identifiable information will be sent to Google. [Learn more](#)
- Measuring:  Page views  Scrolls  Outbound clicks + 3 more
- Modify events**  
Modify incoming events and parameters. [Learn more](#) >
- Create custom events**  
Create new events from existing events. [Learn more](#) >
- Measurement Protocol API secrets**  
Create an API secret to enable additional events to be sent into this stream through the Measurement Protocol. [Learn more](#) >
- Redact data**  
Prevent specific data from being sent to Google Analytics. [Learn more](#) Email active URL query parameter keys inactive >

Google tag

- Configure tag settings**  
Configure your Google tag behavior, including cross-domain linking and internal traffic. [Learn more](#) >
- Manage connected site tags**  
Load tags for additional properties or products using this stream's on-page Google tag. [Learn more](#) 0 connected >
- View tag instructions**  
Get instructions for how to implement your Google tag for this data stream. [Learn more](#) ✓ Data flowing >